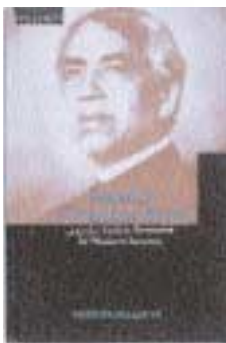


**B**IOGEOCHEMISTRY OF GULF OF MEXICO *Estuaries* has been described as “the definitive ecological guide to the Gulf of Mexico Estuaries.”

It is co-edited by Robert Twilley, a UL Lafayette biology professor. Other co-editors are Thomas S. Bianchi, an associate professor in the Department of Ecology, Evolution and Organismal Biology at Tulane University, and Jonathan R. Pennock, an associate professor at the University of Alabama and the Dauphin Island Sea Lab in Alabama.

The interdisciplinary reference features contributions from a diverse group of scientists along the Gulf Coast who contribute information about how the Gulf’s estuarine systems work. It also establishes a basis for how those systems compare with other temperate estuaries.

*Biogeochemistry of Gulf of Mexico Estuaries* was published by John Wiley and Sons, Inc.



**N**EARLY A CENTURY AGO, JAGADIS Chandra Bose pioneered research in the areas of physics and physiology and became the first Indian scientist to receive international recognition.

Dr. Subrata Dasgupta, director of

the UL Lafayette Institute of Cognitive Science and Eminent Scholar Chair in computer science in the Center for Advanced Computer Studies, examines Bose’s scientific advances in *Jagadis Chandra Bose and the Indian Response to Western Science*.

Bose, who was the first to produce millimeter-length radio waves and study their properties, also experimented with plant life. Although his findings were often met with a mixture of admiration and scorn from his European and American counterparts, his contributions furthered the scientific and intellectual history of India.

Dasgupta, who is also a professor in the university’s History Department, said the book is the “first comprehensive, critical study of Bose’s science and philosophy of nature, and of his complex wayward genius.”

The book, Dasgupta’s seventh, was published by Oxford University Press.



**D**ARRELL BOURQUE’S NEWEST COLLECTION of poems, *Burnt Water Suite*, is modeled on the structure of a classical music suite.

Poems in the various sections are different in tone, theme and technique but a relationship is apparent.

“I hope a poetic sensibility that is distinctly a Louisiana sensibility comes across in the poems,” Bourque said. “Many of them are about family relationships and the idea of grace and how grace is present in our day-to-day lives.”

*Burnt Water Suite* is the third poetry collection for Bourque, who is the Friends and Humanities/Board of

Regents Endowed Professor and a UL Lafayette Distinguished Professor.

Luis Urrea, former writer-in-residence at UL Lafayette, describes his colleague’s newest book as “at once aching-ly beautiful and startlingly bracing. In language that moves from impressionistic hues through elegy and into a bright analytical clarity, Bourque goes deep. Hungry for the sacred, yet reeling in the mundane, his poems glow on the page. Here is a poet in full flight.”

*Burnt Water Suite* was published by Wings Press in San Antonio.



**H**OW DID ART IMITATE LIFE IN OPERA composer Giacomo Puccini’s “Tosca” and playwright Victorien Sardou’s “La Tosca”?

That’s the question UL Lafayette history professor Susan Nicassio answers in *Tosca’s Rome: The Play and the Opera in Historical Perspective*.

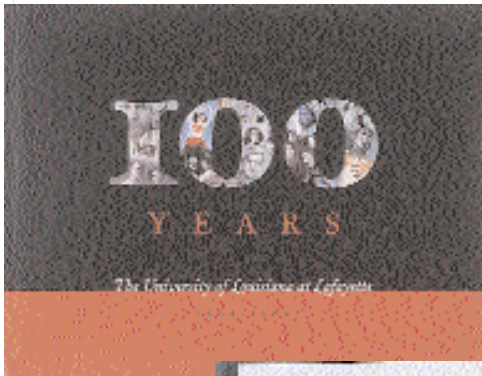
Nicassio, a former opera singer who has sung the role of Tosca, examines the political climate of 18th and 19th century Rome, which shaped both works’ fictional setting. She offers insight into each character. She also analyzes and compares each scene of Puccini’s opera with Sardou’s play.

In March, Nicassio appeared on the “Live from Lincoln Center” telecast of the New York City Opera’s production of “Tosca.” She discussed the play with Beverly Sills, a coloratura soprano and former director of the company, and playwright John Guare.

*Tosca’s Rome* was published by the University of Chicago Press.

# UL Lafayette Centennial Souvenirs and Gifts

## 100 Years by Kathleen Thames



“All we had in the beginning was a field—sugar cane, not football—and not a shade tree on the entire 25 acres.” That’s how Edwin L. Stephens described the start of Southwestern Louisiana Industrial Institute when he was chosen its first president in 1900. The images in *100 Years* reflect the development of that cane field, key events in the school’s history, and the men and women who helped SLII

become the University of Louisiana at Lafayette, the state’s second-largest university.

**132 PAGES; OVER  
175 PHOTOGRAPHS,  
LIMITED EDITION.**



1

## Celebration of the Century: A Video Scrapbook

The award-winning video *Celebration of the Century* uses hundreds of photos gathered from the University of Louisiana at Lafayette archives to take viewers on a brief, nostalgic trip through the university’s past.

PRODUCED BY ERIC MARON AND JULIE SIMON-DRONET



2

